



Rocky Tales

Volume 42, Issue 6

JUNE 2016

LAKE HAVASU GEM & MINERAL SOCIETY

The Official Publication of The Lake Havasu Gem & Mineral Society

Editor: Michelle Smedley

**BOARD MEETING
TBA**

**NO GENERAL MEETING
in
June, July or August.**

Our next meeting is September 9th!

**Rock & Egg
Breakfast
4th Monday each
month
9:00 a.m.
At
Golden Corral**

Inside This Issue:

Lake Havasu Gem & Mineral Society Information	Page 2
President's Message	Page 3
Shop Layout	Page 4
Founder's Plaques	Page 5
General Meeting Minutes	Page 6
Lapidary Shop Building pictures	Page 8
Mojave Trails National Monument Updates	Page 9

Happy Birthday

Steve Bryson	Nathan Scott
Natalie Ellis	Scott Sutherland
Megan Habelitz	Gwen Walker
Joe Handler	Tamara Wilhelm
Linda Leuzinger	

Happy Anniversary

**Barry & Sheila Bandaruk
Michael Erland
Jack Fritchey
Howard & Rosalyn Wicks**

CLUB INFORMATION

The Purpose of this Society shall be to:

- A. Increase our appreciation of the beauty and value of the land in which we live.
- B. Foster good fellowship among its members.
- C. Host an annual Gem and Mineral Show for the community.
- D. Foster awareness of the earth sciences by:
 - 1. Increasing knowledge pertaining to minerals, gems, and rocks.
 - 2. Disseminating knowledge of collecting and classification of minerals, fossils and rock through collection and classification.
 - 3. Improving the practical knowledge of cutting, grinding and polishing materials to use in the design and creation of jewelry and other useful objects.
- E. Provide educational scholarships in the scientific fields.
- F. Procure and improve the Society's property.

The Lake Havasu Gem and Mineral Society meets the second Friday of each month from September through May at Mt. Olive Parish Center, 2170 Havasupai Blvd., Lake Havasu City, AZ. The membership typically votes to eliminate the June, July, and August meetings.

Fiscal Year: February 1 – January 31.

Name badges are required for all members.
 One time or replacement badge cost - \$8.00
 Single membership cost - \$16.00
 Family sponsored Junior membership cost - \$8.00
 Family membership cost - \$16.00 for the first member and \$8.00 for each member thereafter with a maximum of \$25.00.

Annual Membership dues are payable on January 1 and shall be delinquent after the February meeting. Please remit payment to:

Lake Havasu Gem & Mineral Society
Attn: Membership Chairperson
P.O. Box 990
Lake Havasu City, AZ 86405-0990

The Lake Havasu Gem & Mineral Society is a member of The Rocky Mountain Federation of Mineralogical Societies (RMFMS) and associated with the American Federation of Mineralogical Societies (AFMS).

OFFICERS and DIRECTORS

Hank Smedley	President
Linda Harley	Vice President
Kathie Bryson	Secretary
Jerry Harley	Treasurer
Ed Darnell	Sgt at Arms
Patrick Bell	First Year Director
Gayle Gilpin	Second Year Director
Carol Jose	Third Year Director
Susan Stievo	Past President

COMMITTEES

	Chairman	BOD Rep
Club Promotion	Open	Gayle Gilpin
Communications	Michelle Smedley Bruce Wilhelm	Secretary Kathie Bryson
Education	Open	Patrick Bell
Facilities	Open	Ed Darnell
Field Trips	Open	Open
Finance	Open	Jerry Harley
Fund Raisers	Open	
Gem Show	Barry Bandaruk	
Greeters	Edith Walden	Gayle Gilpin
Hospitality	Helen Reyes Kathy Padilla	Ed Darnell
Property	Open	Carol Jose

Rocky Tales is published monthly. The submission deadline is the 3rd Friday of the month by email to:

aredtigress@gmail.com

Rocky Tales Team: Michelle Smedley and
Linda Harley

Website: Moderator: Bruce Wilhelm
<http://www.lakehavasugms.org/>

Facebook Page:
<https://www.facebook.com/lhcgems/?fref=ts>

--President's Message--

Hello everyone, I hope everyone is having a fine summer. Let me bring you up to speed on what is happening. Several things have taken place since the club last met. We have been meeting regularly to establish the necessary policy and procedures for our new facility and have made significant progress in that area. The power is now on and in our name, trash service has been started and we have had to make some significant changes to the proposed layout of the space.

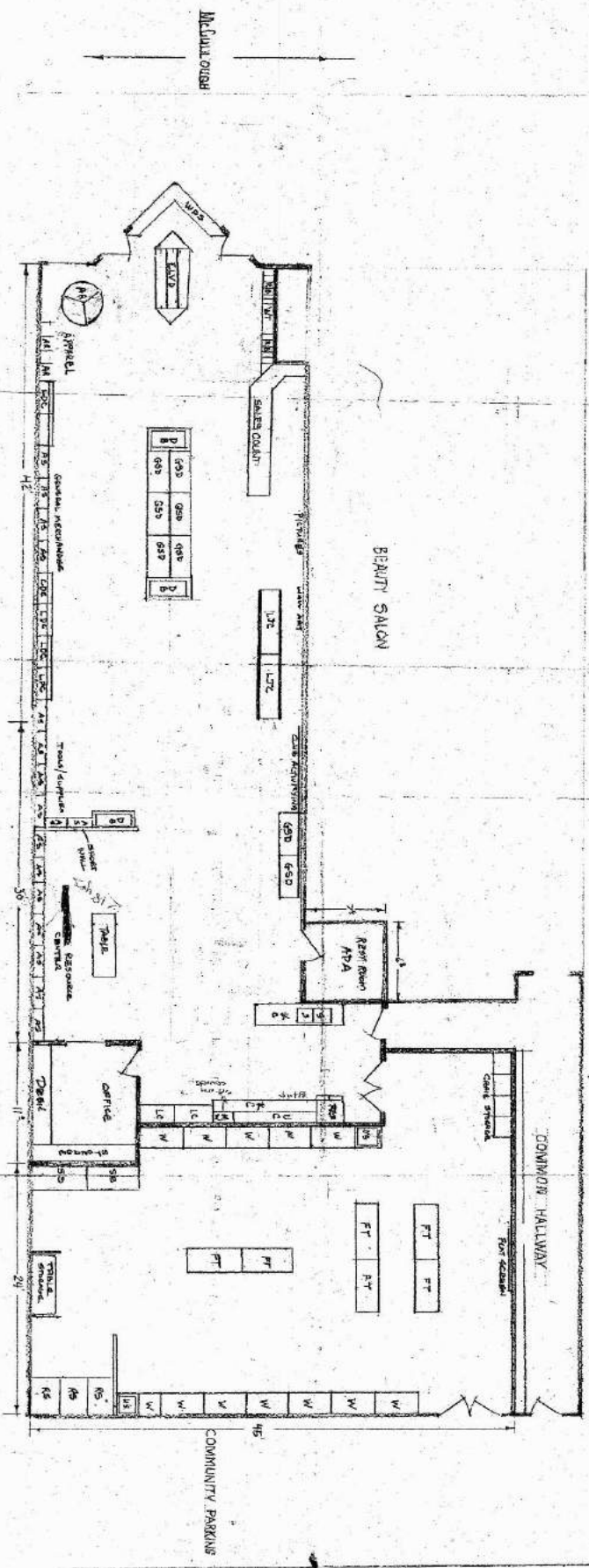
Originally we had planned to construct the shop in the front area of the space. Since this is a commercial building, the city code requires the construction to be done by licensed contractors. The cost estimate to hire contractors to do the work would have been \$15,000 to \$20,000. That was significantly more than we expected to spend, so the matter was brought before the Board of Directors.

A decision was made to go with a new layout that would save money and allow for a larger capital reserve, to help us as we start up. The new layout will not require contractors; we can do the work ourselves. Take a look at the new floor plan put together by Ed Darnell and you will see that the shop will now be located in the back room which will also serve as our meeting space. The front space now allows for an expansion of rock and mineral displays and the library/reference material area. We will not be putting in a second bathroom initially; that will have to wait until we have sufficient funds, or we can find a contractor who is willing to supervise the construction and allow us to do the work. If any of our members are licensed contractors in Arizona and are willing to help us out in this area we would appreciate hearing from you.

So now instead of major construction; we are going to be concentrating on building display cases and items needed to furnish front space and the work shop. We are also looking for equipment for the shop, and will be building a closed water supply system for the tools that will separate the waste material and circulate the water.

For now, that is where things stand. We are continuing to push along to make this a reality. If anyone would like to participate in the project we would be glad to have your help. Take a look throughout this edition; there are many ways to become involved. We welcome your ideas, participation, or labor.

HALL, HERE ARE RAISED FLOORS.
24-



SCALE 1/4" = 1 FOOT

Lapidary Club Founders! (That's you, readers)

Celebrate the opening of our Lapidary club by becoming a recognized Founder with your name on the plaque. The plaque will be proudly and prominently displayed where the public can see it in the shop.

As we move forward with our own facility, we are asking for tax-free Cash donations from our members.

There are three levels of giving per Name:

- \$500 – Angel
- \$250 – Patron
- \$ 50 – Founder

Your name will be added alphabetically to the list on the Founder's plaque. The Commemoration will be performed at the Open House in October.

Please print, circle the level of donation, and send in the form below, along with your check made out to Lake Havasu Mineral & Lapidary Group. Mail to: PO Box 990, Lake Havasu City, AZ 86405

.....
Name #1 _____ \$500 \$250 \$50

Name #2 _____ \$500 \$250 \$50

Total check: \$ _____

GENERAL MEETING MINUTES
LAKE HAVASU GEM & MINERAL SOCIETY
May 13, 2016
2186 McCulloch Unit B
Lake Havasu City, AZ 86403

Members present: 27

Guests present: 3

Club President Hank Smedley called the dual meetings to order at 7:07 pm.

Flag Salute: President Hank Smedley led the club in the Pledge of Allegiance.

Secretary's Minutes: The minutes for the April LHGMS general meeting were published in the last edition of the *Rocky Tales* newsletter. April Minutes accepted as written. No minutes for LHMLG as this is the first General Meeting for that organization.

Treasurer's Report: Vice President Linda Harley read the treasurer's report of April 29, 2016 for LHGMS.

The Treasurer's Report will be filed. LHMLG has received funds from LHGMS to open a checking account, pay the lease deposit on the building and building costs. Additional funds will be transferred as needed. Building deposit was \$4500, rent will be \$1500/month. Group takes possession June 1, 2016 for build-out, rent begins September 1, 2016.

Membership Report & Guests:

Director Gayle Gilpin stated that the club accepted 2 new members last month. They are:
Leonard & Bonnie Wegman – Lake Havasu City/Wyoming

The Wegman's have traveled back to Wyoming, they will receive their welcome packets next fall.

3 guests attended our meeting today. Director Gayle Gilpin presented 'welcome' rocks to the guests.

We currently have 137 members.

Education Report:

Director Patrick Bell and club member Michelle Smedley will present two scholarships on May 16th at the High School's Scholarship Award ceremony.

Director Patrick Bell reported the Bureau of Land Management (BLM) contacted him in regards to donating the past office's mineral display. They are wonderful and will be a great addition to our new Lapidary Shop.

Recent field trips:

President Hank Smedley reported on the trip to Keenan mine, LHGMS' claim. The work done - fencing and signs - satisfies the requirements of the claim for this year. The day was unusually successful due to Director Patrick Bell finding a nice Fluorite vein, some of which came home with club members.

Gem Show - Show Chair Barry Bandaruk will call a meeting in June.

We are always happy to have new members in the club, once in a while there's a special new one. This month we are excited to welcome Sarah Flynn Bell!

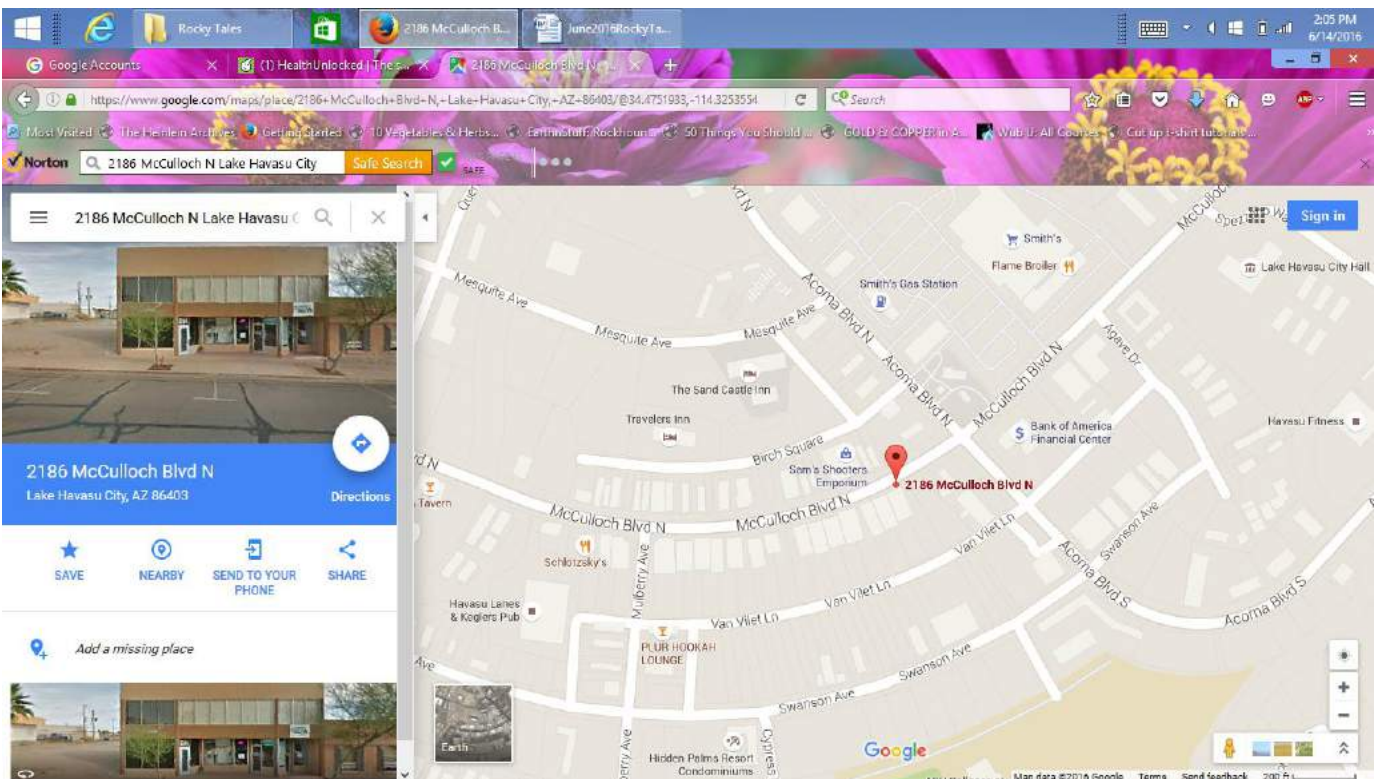
Sarah met mommy Megan Habelitz and daddy Patrick Bell May 16th, at 7:04 pm. She was so eager to see her new world that she arrived early, weighing in at 5lbs, 13 oz. Because she came early, both her and mom were treated to a two day stay in the hospital. No worries, Sarah is perfect - see for yourself!



The happy family welcomes phone calls, emails, texts and visits.

Below: Front of the building which will hold our new Lapidary Shop and meeting room

Right: Inside the front room, to become retail space, displays, library and the kitchen



National Monuments - Mojave Trails National Monument Updates

You can hike, camp, fish and climb in the new Mojave Trails monument, but you can't do this!

LA Times May 7, 2016 by *Louis Sahagun*

What can you do?? Well Rockhounds, we spoke up and they are listening!! Not only is the BLM willing to work with us to get Rockhounding allowed in the Management Plan for the new Mojave Trails National Monument, they are giving amateur fossil collecting rules a good look. Check this out from an email from the Needles BLM office:

"...they are in the process of trying to modify the PRPA regulations as they apply to BLM National Monuments to reflect the intent of BLM's collecting policies, which is to say they recognize traditional casual collection of insignificant terrestrial and marine non-vertebra fossils (trilobites). These activities essentially engage and educate the public about paleontology, which in the long run should serve to better protect those fossils that are considered significant and important"
Wow- that is HUGE!!!

They are willing to work with us, but the only way they can do that, is if we tell them at what spots we want to be able to continue to collect.

The BLM has a job to do, protect the resources for which the monument was created, while letting us collect. Normally, they just preclude anyone from picking up a rock in an area with protected fossils or cultural resources, but this is a huge monument with plenty of room for both, and they are willing to map it all out and try to create a balanced use. All you have to do is send them the places you would like to be able to continue to Rockhound or collect fossils.

They are willing to do all the mapping from any info that is given to them. You can send them the locations in section township range, GPS, PDF map files or maps from other apps or old paper maps from magazines or books.

While there are no promises or guarantees, and we will likely lose some spots, our option is for this Monument to end up like all the others, with NO rock collecting at all. Let's work with the BLM to make this the first National Monument in CA, perhaps the U.S., to allow rock collecting.

Please send whatever location information you have on places where you collect rocks or fossils in the New Mojave Trails National Monument to the **Christopher Dalu**, cdalu@blm.gov at the Needles BLM Field Ofc. The Needles office is the lead on the Management Plan, but Katrina Symons, Field Manager for the BLM office is available to answer any questions or concerns as well. You can reach her at: <mailto:ksymons@blm.gov>.

Let's make this happen people. Future generations ability to collect rocks in the Mojave Trails National Monument, depends on you.

Things are heating up in Lake Havasu, and it's not just the weather!



We Need You!

Do you have financial experience? Fundraising experience? Do you love brainstorming and being creative? We have just the committee for you! There is an immediate need for participation in the Lapidary Shop Finance and Fundraising Committee! This committee is essential for the future of the shop. Treasurer Jerry Harley is now forming this committee, Volunteers should email Jerry at lhgmstreas@gmail.com or text at [417-880-2016](tel:417-880-2016).

When the shop is ready to open, we will need all club members to participate. There are lots of options, no matter your skills there is a volunteer spot for you! Please look over the list below, once you've chosen an area, contact Director Patrick Bell, flynntheoutsider@yahoo.com with your choice.

Lapidary Instructors

Youth Program Instructors

Shop Monitors

Consignment staff

Entry staff

Cleanup staff

Is there an area that's missing? Let us know and we'll include it.

This is your shop, we need every club member's support and involvement!



Please send exchange bulletins to

The address below

Rocky Tales

**Lake Havasu Gem & Mineral
Society, Inc.**

P.O. Box 990

Lake Havasu City, AZ 86405